

# 2020 CMOM Package 2A Project

Non-Mandatory WebEx Pre-Bid Meeting  
October 12, 2021

Rachel Hoffmeyer, P.E.

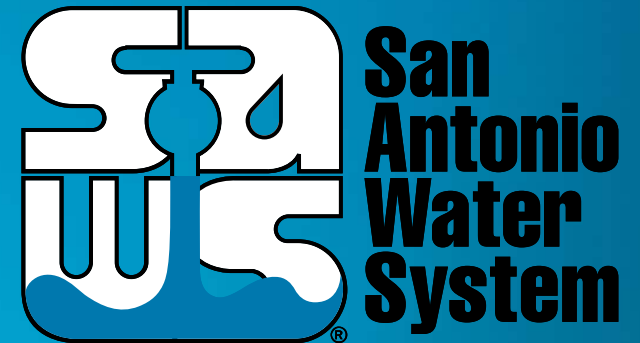
Project Engineer, SAWS

Janie Powell

Contract Administrator

Marisol V. Robles

SMWVB Program Manager



MAKING SAN ANTONIO  
**WATERFUL**



# WebEx Housekeeping

- Stay muted during the entire presentation.
- Sign-In using the Chat feature ensuring to select “Everyone” from the drop down menu with name, company name and contact information.
- Ask questions at any time during the presentation utilizing the Chat. Questions will be addressed at the end of the presentation.
  - Ensure to direct your questions to the entire group by selecting everyone from the drop down.
  - All formal responses to questions will be provided via an Addendum.
- Audio only attendees may follow along on the presentation posted to the SAWS solicitation website.

## Oral Statements

Oral statements or discussion during the pre-bid meeting today will not be binding, nor will it change or affect the terms or conditions within the Plans and Specifications of this Project. Changes, if any, will be addressed in writing only via an Addendum.

# Agenda

- General Information
- Small, Minority and Woman-Owned Business (SMWB Requirements)
- IFB Schedule
- Contract Solicitation Website
- Vendor Registration & Notification (VRN)
- Contract Requirements
- Bid Packet Preparation
- Key Reminders
- Temporary Bid Opening Instructions
- Contact Information
- Technical Information

## General Information

- Non-Mandatory pre-bid meeting
- Presentation has been posted on SAWS website
- CCTV disclaimer form has been posted on SAWS website
- Construction services being procured through low bid
- Construction Estimate: \$1,212,173.60
- Calendar Days: 240 days

## Aspirational SMWB Goal

Industry	Aspirational SMWB Goal
Construction	20%

The aspirational SMWB goal is 20% of your total bid price.

## Accepted SMWB Certification Agency

- **South Central Texas Regional Certification Agency**
  - MBE, WBE, SBE (Includes “HUB” Program)

### Minimum Qualifications for SMWB recognition:

- **SBE-Certified** (even MBEs and WBEs)
- **Local office or local equipment yard**

# Good Faith Effort Plan (GFEP) FAQs

- **Q: Is the 20% aspirational SMWB goal mandatory?**  
A: No, but we ask prime contractors to do their best with good faith outreach efforts. If the goal is not met, proof of outreach efforts is required with the submittal.
- **Q: What if I am having trouble finding SMWB subcontractors?**  
A: Please email the SMWVB Program Manager with the scopes of work you are seeking. You will receive lists of local SMWVB-certified firms to contact.
- **Q: What if my business is SMWB-certified? Do I need to find SMWB subs?**  
A: If your firm is SMWVB-certified, you will most likely meet the goal. However, the GFEP is a required document, and a good faith outreach effort is still necessary.
- **Q: Do I need to include all my subcontractors in the GFEP or just those that qualify towards the SMWB goal?**  
A: All subcontractors need to be included in the GFEP, even those that may not count towards the SMWB goal.
- **Q: What if I have questions about the GFEP?**  
A: Please contact the SMWVB Program Manager at 210-233-3420, or at [Marisol.Robles@saws.org](mailto:Marisol.Robles@saws.org). GFEP questions can be asked at any time before the submittal is due.



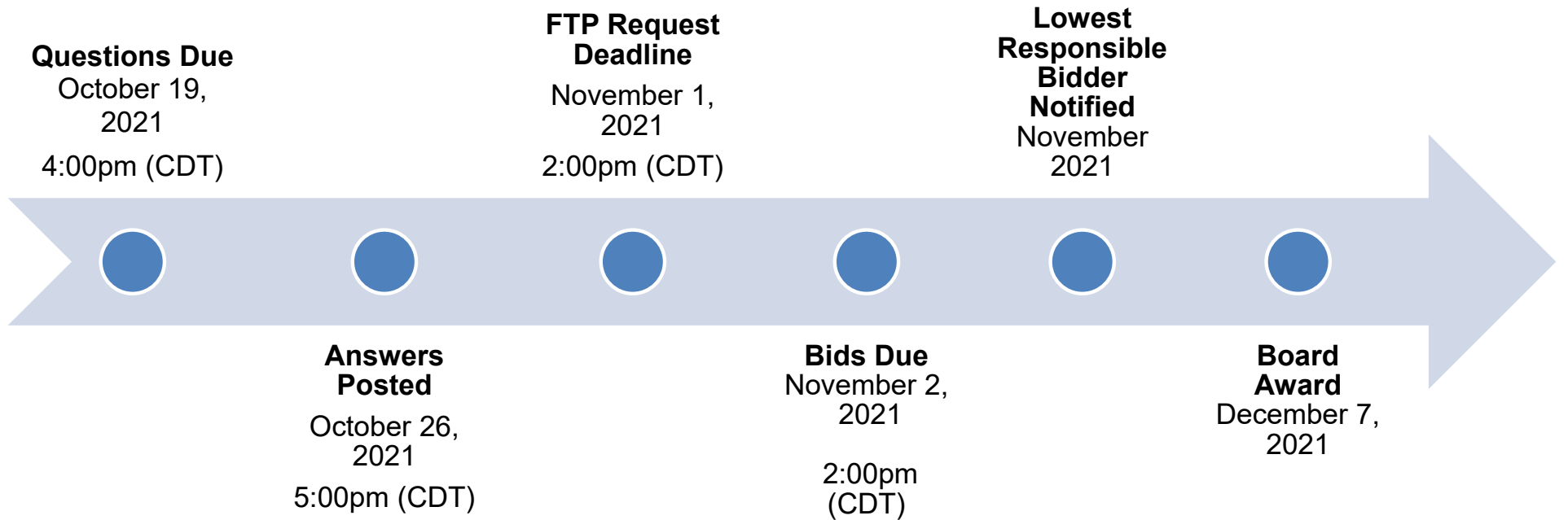
# Post Award: Subcontractor Payment & Utilization Reporting (S.P.U.R.) System

- 1. Subcontractor & Supplier Payment Tracking
- 2. Subcontractor and Supplier Additions or Substitutions
- 3. LCP Tracker
- 4. Must be Current and Accurate before Retainage is released

<https://saws.smwbe.com>

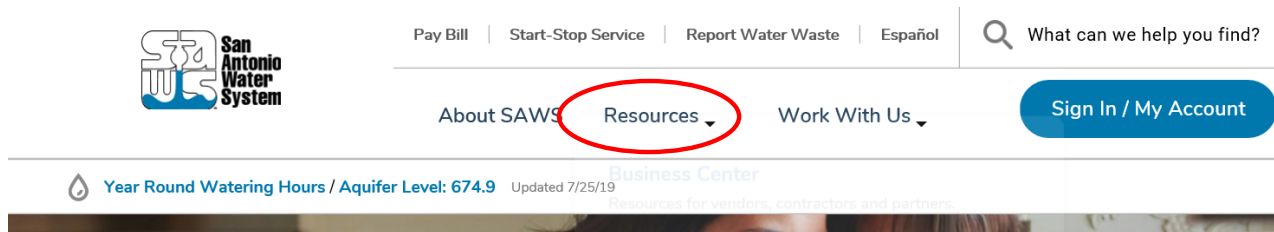


# IFB Schedule

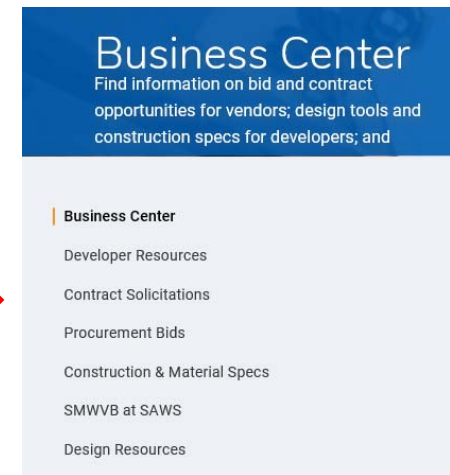


# Contract Solicitations Website

- To locate the Contract Solicitations website choose Resources



- At the drop down menu choose Contract Solicitations.



# Vendor Registration & Notification (VRN)

## Reasons to Register in the VRN

- Receive bid notices directly in your email “Inbox”.
- Download bid documents.
- Subscribe to specific bids.
- Receive addendum notifications.



Notify Me

Receive updates sent straight to your inbox.

Subscribe

[https://apps.saws.org/Business\\_Center/Contractsol/](https://apps.saws.org/Business_Center/Contractsol/)

# Contract Requirements

## Prevailing Wage Rate and Labor Standards – Section 2.10 of the General Conditions

- Payroll records are subject to review
- Contractors to utilize LCP Tracker
- Certified payroll to be submitted on weekly basis
- Contractors are responsible for sub-contractor payroll
- Late payrolls delay contractor payments from SAWS
- Wage decisions are included within the specifications
- Site visits are random and unannounced
- Interviews will be conducted and will be private & confidential
- All apprenticeship programs will need to be approved by Department of Labor prior to starting

# Contract Requirements

## Supplemental Conditions

- Insurance requirements are found in Section 5.7 of the GCs
  - Installation Floater in lieu of Builder's Risk
  - Maintain insurance coverage during the construction of this Project
- Will ask for insurance prior to Board award to expedite execution of the contract
- All contracts with SAWS must be compliant prior to executing the contract for this project

# Contract Requirements

## Supplemental Conditions (Continued)

### Apparent Low Bidder

- Notified within 24 hours of Bid Opening
  - To provide the following within one (1) business day
    - Conflict of Interest Questionnaire - Form CIQ (Rev. 1/1/2021)
    - Proof of Insurability
    - Company Information Packet
    - Statement regarding ability to complete the project
    - W-9
    - Baseline Schedule with estimated NTP of 1.5.22
- \*And, if bid was submitted electronically without a Bid Bond:
- Cashier's Check or Certified Check

# Contract Requirements

## Supplemental Conditions (Continued)

- Apparent low bidder shall also provide the following within one (1) business day  
Statement of Bidder's Experience
  - Three (3) projects completed between 2016 – 2021
  - A-1 demonstrates construction of a min. of 2,000 LF by CIPP for sanitary sewer mains 8-in +
  - A-2 demonstrates construction of a min. of 2,000 LF by CIPP for sanitary sewer mains 8-in +
  - A-3 demonstrates construction of a min. of 200 LF by Open-Cut for sanitary sewer mains 8-in +
  - A-1 and A-2 shall be different projects
  - A-3 may be the same as one of the projects provided for in A-1 or A-2 if it meets requirements
  - A-1 and A-2 must have been completed by the Bidder
  - A-3 may have been completed by the Bidder or Sub-Contractor



# Contract Requirements

## Supplemental Conditions (Continued)

- Contractor shall perform the work with its own organization on at least 40% of the total original contract price which should be indicated on the Good Faith Effort Plan.

Prime Contractor's Percentage of Participation: (Ex: 100% is the total value of the contract.) \_\_\_\_\_ %

- Liquidated damages will be assessed at \$1,148.50 per day

# Bid Packet Preparation

- Utilize the Bid Packet Checklist within the specifications
- Double check all mathematical calculations and verify all extensions
- Ensure Mobilization and Preparing Right-Of-Way do not exceed percentage , excluding the allowance.
- Addendums are acknowledged on the Bid Proposals
  - Check our website regularly for addendum postings
  - It is possible to have multiple addendums during the time frame in addition to the scheduled final addendum
  - Known Addenda are in response to questions

# Key Reminders

- All questions should be sent in writing to the corresponding Contract Administrator by email or fax.
- Please identify the project by its associated solicitation number.  
(CO-00482)

# Temporary Bid Opening Procedures

- Bids will be submitted using SAWS' temporary bid opening procedures
- SAWS encourages and prefers the submission of electronic bids using its secure FTP site.
  - Bidders should submit a request via email to obtain access to the site no later than 24 hours before the bid opening.
- Or, Bidders may drop off bid; but only the required items
  - Drop box is located at 2800 US Hwy 281 N, Customer Service Tower
    - Enter the first set of glass double doors
    - Insert into the black drop box on the wall on the left hand side
- Late bids will not be accepted and will be returned unopened.
- Bid Opening will be handled via WebEx only; link found in IFB

# Contact Information

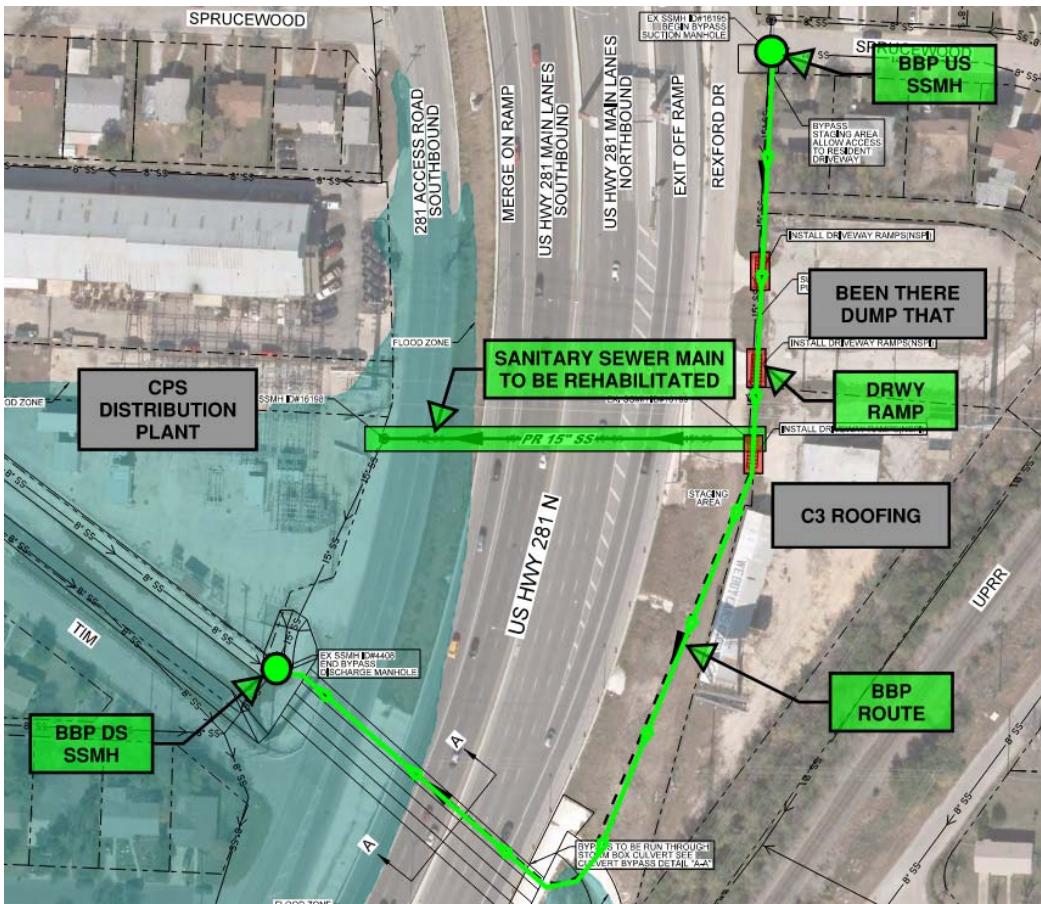
<u>Contact Name</u>	<u>Title</u>	<u>Telephone Number</u>	<u>Email address</u>
Janie Powell	Contract Administrator	210-233-2443	<a href="mailto:Janie.Powell@saws.org">Janie.Powell@saws.org</a>
Marisol V. Robles	SMWVB Program Manager	210-233-3420	<a href="mailto:Marisol.Robles@saws.org">Marisol.Robles@saws.org</a>

## REMINDER

Please be advised that Bidders are prohibited from communicating with any other SAWS staff, the Consultant, the Developer, or City of San Antonio officials regarding this IFB up until the contract is awarded as outlined in the Instructions to Bidders

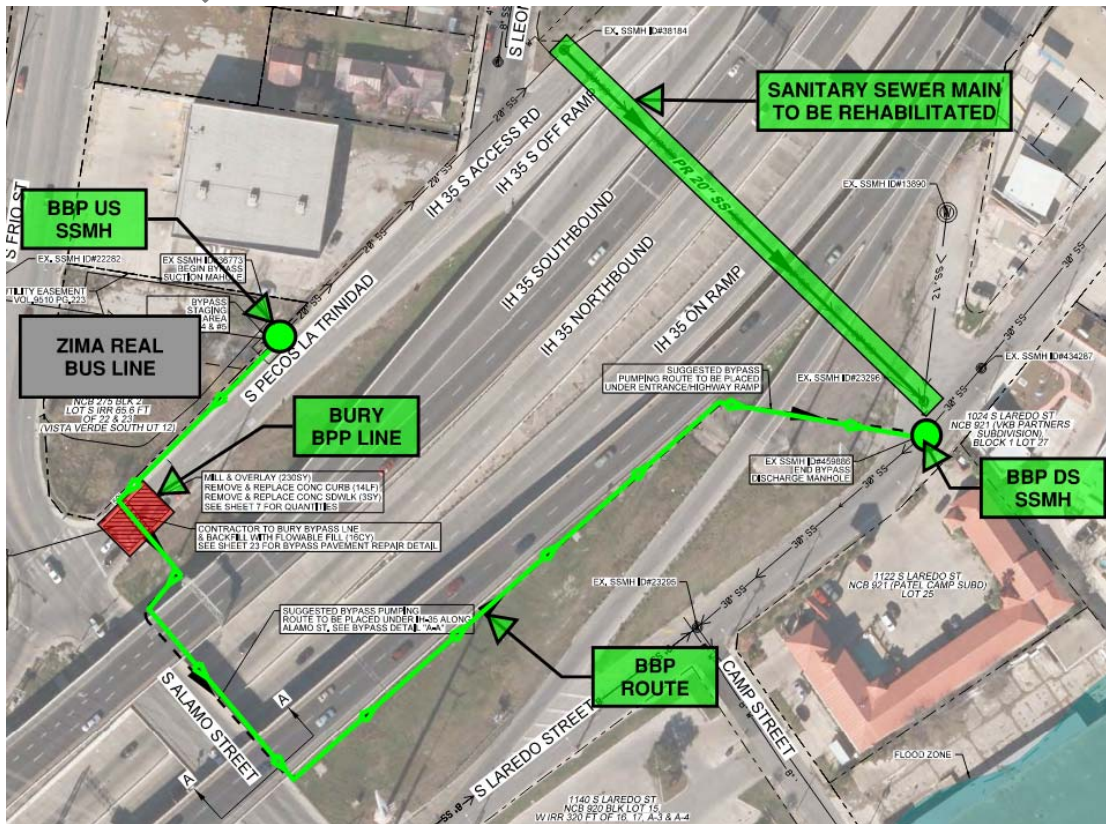


# Project Overview – Site 08



- Site 08 consists of the rehabilitation of approximately 315 LF of 15” CI pipe by CIPP.
- Contractor to coordinate w/ C3 Roofing, Been There Dump That and CPS Energy for driveway closures/ramp installation.
- Segment construction will also require coordination w/ TxDOT and CoSA.
- Contractor shall complete this rehabilitation during night hours to minimize impact to traffic and surrounding businesses as approved by TxDOT and SAWS.

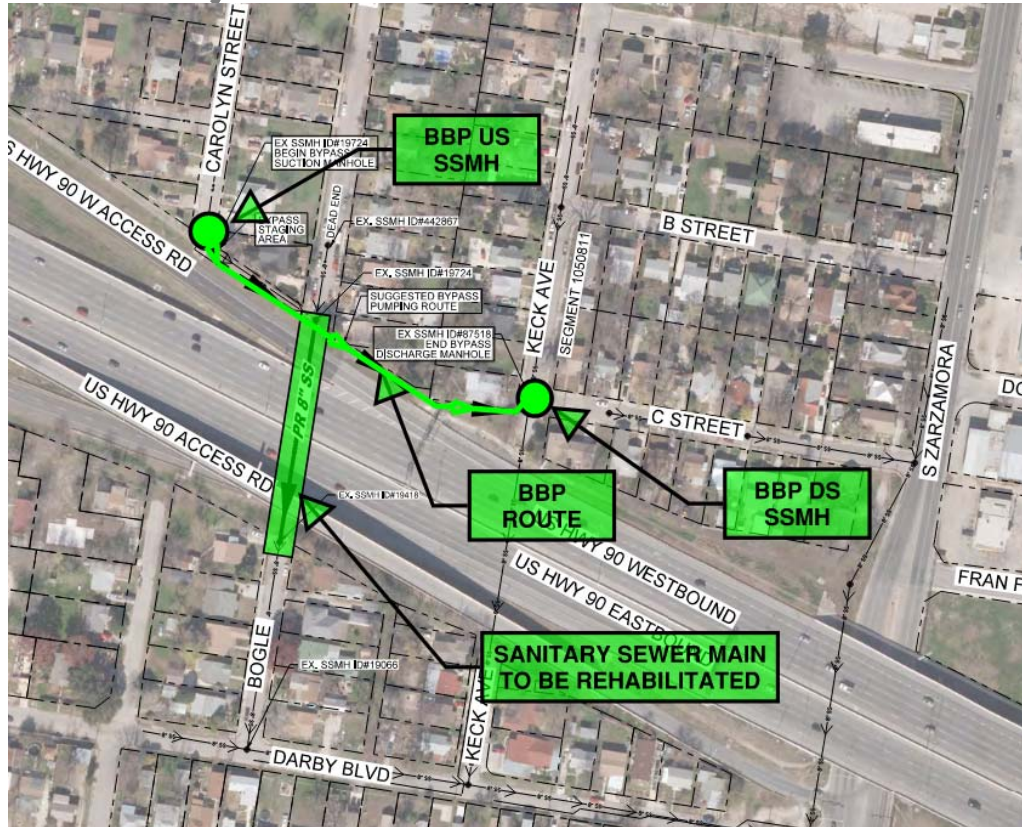
# Project Overview – Site 14



- Site 14 consists of the rehabilitation of approximately 430 LF of 20" DI pipe by CIPP.
- Contractor to coordinate w/ Zima Real Bus Line for easement access.
- Segment construction will also require coordination w/ TxDOT, CoSA and VIA.
- Contractor shall complete this rehabilitation during night hours to minimize impact to traffic and surrounding businesses as approved by TxDOT and SAWS.

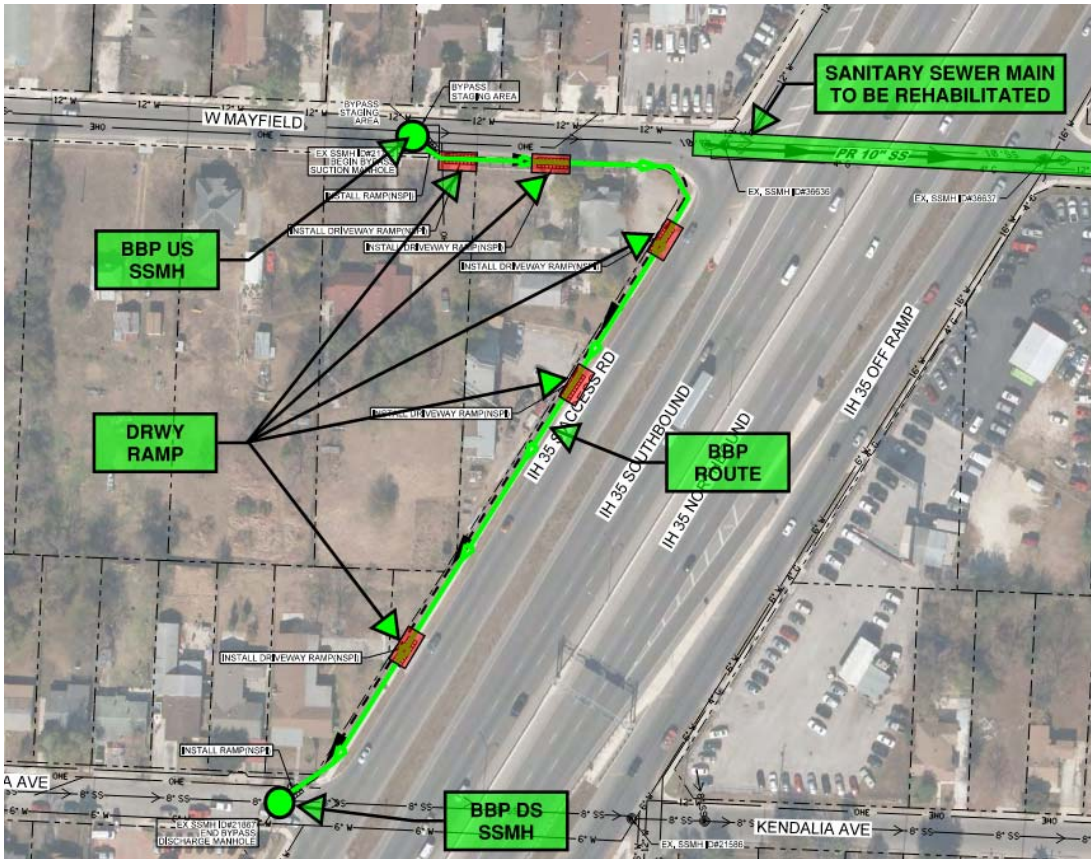


# Project Overview – Site I6A



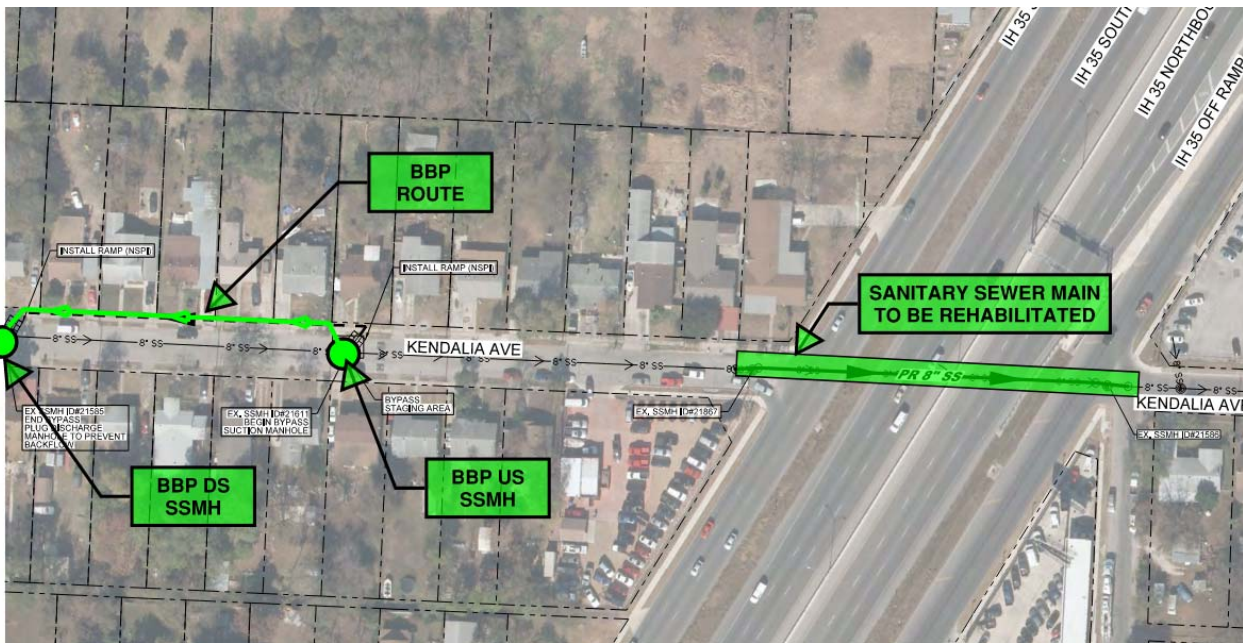
- Site I6A consists of the rehabilitation of approximately 330 LF of 8”VCP pipe by CIPP.
- Segment construction will require coordination w/ TxDOT, CoSA and homeowners.
- Contractor shall complete this rehabilitation during night hours to minimize impact to traffic and surrounding businesses as approved by TxDOT and SAWS.

# Project Overview – Site 18A



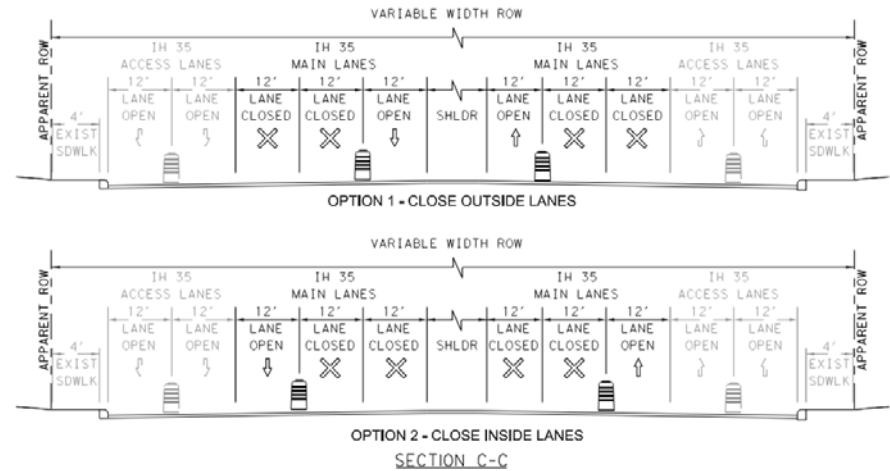
- Site 18A consists of the rehabilitation of approximately 257 LF of 10" CI pipe by CIPP and the installation of approximately 50 LF of 10" PVC by open-cut.
- Contractor to coordinate w/ homeowners for driveway closures/ramp installation.
- Segment construction will also require coordination w/ TxDOT and CoSA.
- Contractor shall complete this rehabilitation during night hours to minimize impact to traffic and surrounding businesses as approved by TxDOT and SAWS.

# Project Overview – Site 18B



- Site 18B consists of the rehabilitation of approximately 289 LF of 8" CI pipe by CIPP and the installation of approximately 50 LF of 8" PVC by open-cut.
- Segment construction will require coordination w/ TxDOT and CoSA.
- Contractor shall complete this rehabilitation during night hours to minimize impact to traffic and surrounding businesses as approved by TxDOT and SAWS.

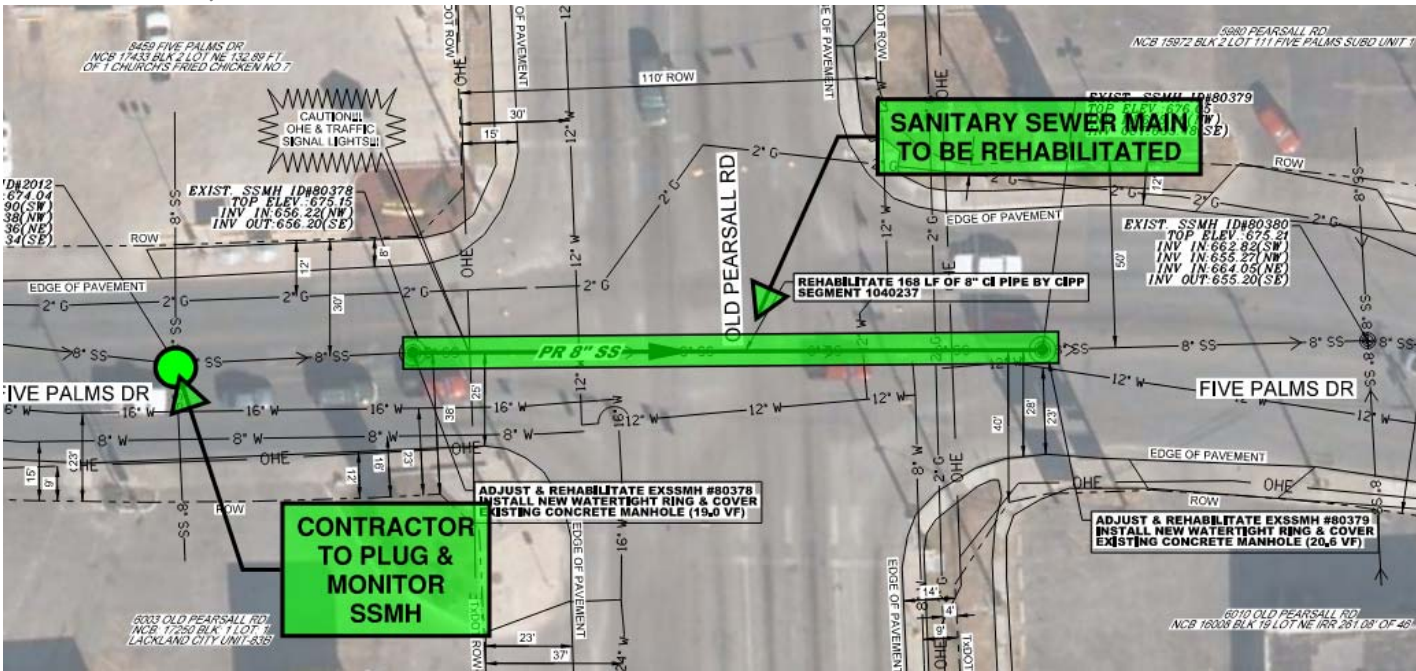
# Project Overview – Site I 8A&B



ITEM	DESCRIPTION	QUANT.	UNIT
530.1	Barricades, Signs, and Traffic Handling (Site 18A&B - IH35 Main Lanes)	1	LS
1103.1	Point repairs for 8" or 10" Diameter, (0'-10' depth) - (Site 18A&B - IH35 Main Lanes) (Opt. 01 or 02)	1	EA
6001	Portable Changeable Message Sign (TxDOT Spec)	2	EA

- Site I 8A&B includes quantities for a potential point repair on the main lanes on IH 35.

# Project Overview – Site 19



- Site 19 consists of the rehabilitation of approximately 168 LF of 8" CI pipe by CIPP.
- Segment construction will require coordination w/ TxDOT and CoSA.
- Contractor shall complete this rehabilitation during night hours to minimize impact to traffic and surrounding businesses as approved by TxDOT and SAWS.

# Special Conditions

## CPS Energy

- Contractor to begin coordination immediately after Notice to Proceed is provided by SAWS to avoid construction delays.

## CoSA

- Contractor shall obtain right-of-way (ROW) permits, and conform to the CoSA requirements for impacted streets along with any other pertinent items located within CoSA ROW
- Floodplain Development permit (FPDP) will be necessary for site 08.

SAWS will provide FPDP to contractor.

## VIA Metropolitan Transit

- Contractor must notify VIA dispatch and Mark Spaulding a minimum of 48-hours prior to commencing on site 14 for bus stop closure.

# Special Conditions

## TXDOT

- Contractor to coordinate with SAWS for obtaining a TXDOT permit. SAWS will obtain permit.
- TXDOT permits expire on the 90th calendar day from issuance, if construction has not started, the permit may be amended by SAWS for an additional 90-day period.

## SAWS

- Final completion of all “Project Sites” shall be achieved in 240 calendar days.
- A maximum of two (2) simultaneous project sites will be permitted to be open unless restricted otherwise by the TxDOT inspector.

# QUESTIONS



*Reminder: Oral statements or discussion during the pre-bid meeting today will not be binding, nor will it change or affect the terms or conditions within the Plans and Specifications of this Project. Changes, if any, will be addressed in writing only via an Addendum.*